

FIVC Butterfly Valve

Wafer type - PN 16 and 10 - PED 97/23/CE



- FIVC Specialized Valves -



FSV-WAF series

Technical data

Main features and materials

- Body type: WAFER
- Production Range: DN 25 - 1200
- Standard Design: EN 593
- Face to Face: EN 558-1 Series 20 (DIN 3202 T3 K1)
ISO 5752 T5 short type
API 609, BS 5155 series except DN 350
- Top Flange: EN ISO 5211 / NFE 29-402
- Drilling Norm: DIN PN 10/16, ANSI cl. 150
- Marking: EN 19
- Hydraulic tests: EN 12266 / ISO 5208
- Remarks: Pressure equipment directive 97/23/CE
- Optional: ATEX (II 2GD) 94 /9/CE
Vulcanized Seat

Field of applications

- Temperature range: -40 °C to 210 °C, material depends
- Standard Max. working pressure: 16 bar DN 32 - 150
10 bar DN 200 - 1200
Max. pressure: 16 bar

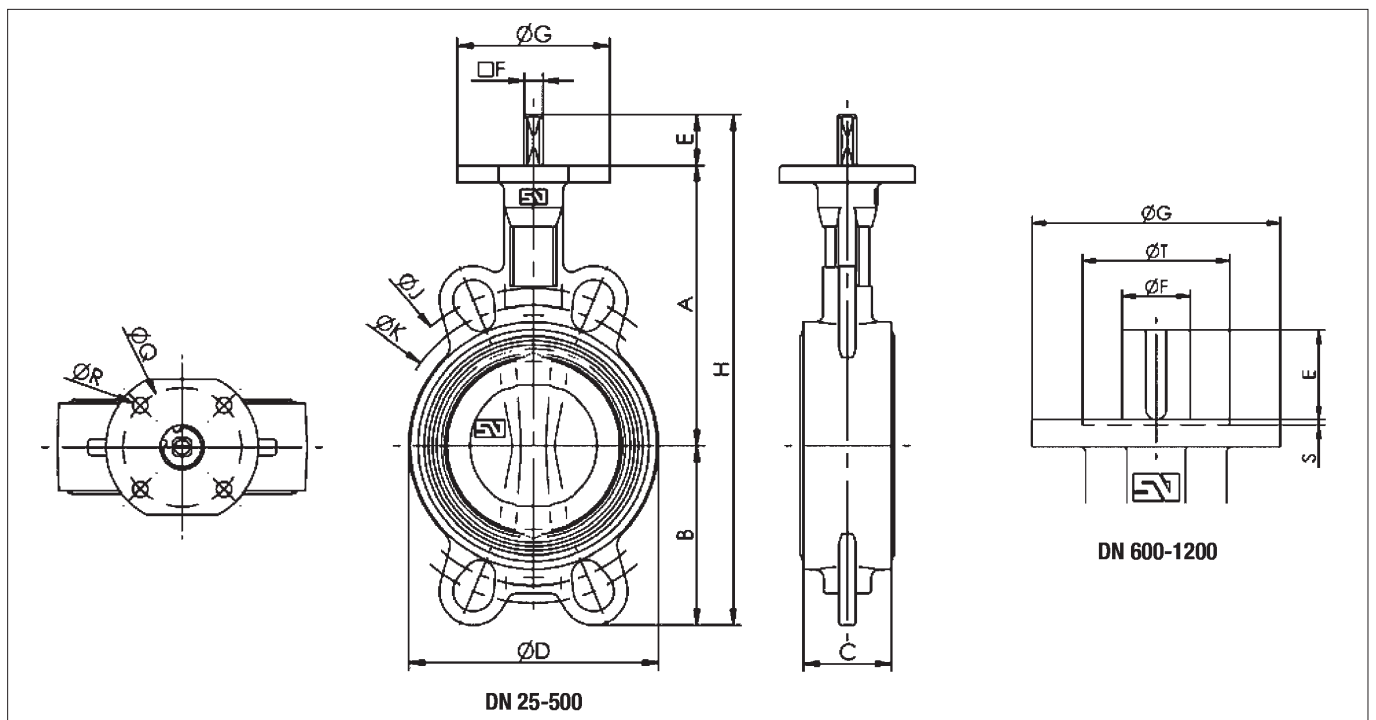
- Water treatment plants and Water distribution
- HVAC (Heat Ventilation Air Conditioning)
- Fire fighting
- General services
- Shipbuilding
- Irrigation
- Powdery products



Description

FSV-WAF butterfly valve is the answer to the demand of a valve according to ISO PN 10/16 standards. The modern technology and design offers a high quality valve at a very competitive price level.

The body is clearly different due to its extended neck allowing pipe insulation with still free access to the actuator. The FSV-WAF butterfly valve is specially designed for fire-safe services, shipbuilding industry, water supplies, water treatment, general services, etc.



DN		GENERAL DIMENSIONS*											TOP FLANGE*				
mm	Inch.	A	B	C	D	E	F	G	H	J	K	Kg	ISO	Q	R	S	T
25	1"	102,5	60,2	33	68	30	11	90	192,7	100	85	1,50	F-07	70	4x9		
32	1 1/4"	102,5	60,2	33	68	30	11	90	192,7	100	85	1,50	F-07	70	4x9		
40	1 1/2"	110	56	33	76	30	11	90	196	110	95	1,60	F-07	70	4x9		
50	2"	120	61,5	43	100	30	11	90	211,5	123	120,6	2,40	F-07	70	4x9		
65	2 1/2"	135	69	46	108	30	11	90	234	145	127	2,70	F-07	70	4x9		
80	3"	141	94	46	124	30	11	90	265	160	145	3,20	F-07	70	4x9		
100	4"	165	106	52	147	30	11	90	301	185,5	165	4,00	F-07	70	4x9		
125	5"	180	126,5	56	180	33	14	90	339,5	225	206	6,20	F-07	70	4x9		
150	6"	193	133	56	206	33	14	90	359	241,3	229	7,30	F-07	70	4x9		
200	8"	225	170	60	257	33	17	90	428	305	280	11,10	F-07	70	4x9		
250	10"	282,5	210	68	324	23	22	130	515,5	362	335	20,20	F-10	102	4x12	3	70
300	12"	308	240	78	376	23	22	130	571	431,8	394	29,60	F-10	102	4x12	3	70
350	14"	338,5	263	78	422	31	22	160	632,5	476,3	445	35,20	F-10	102	4x12	3	70
400	16"	380	308	102	480	31	27	160	719	540	510	55,50	F-12	125	4x14	4	85
450	18"	380,5	340	114	536	38	36	190	758,5			79,70	F-14	140	4x18	4	100
500	20"	432,5	380	127	593	38	36	210	850,5			114,00	F-14	140	4x18	4	100
600	24"	494	440	154	690	80	60	210	1014			170,90	F-16	165	4x22	5	130
700	28"	590	490	165	830	106	65	300	1186			252,90	F-25	254	8x18	5	200
750	30"	590	530	190	836	106	80	300	1226			294,90	F-25	254	8x18	5	200
800	32"	630	565	190	902	106	80	300	1301			346,50	F-25	254	8x18	5	200
900	36"	695	610	203	1010	110	80	350	1415			459,50	F-25	254	8x18	5	200
1000	40"	770	675	216	1116	110	80	350	1555			580,70	F-25	254	8x18	5	200
1100	44"	815	733	216	1215	110	80	350	1658			715,50	F-25	254	8x18	5	200
1200	48"	875	818	254	1334	110	100	350	1803			963,30	F-30	298	8x23	5	230

*Information is based on a standard version (ductile iron body and disc)